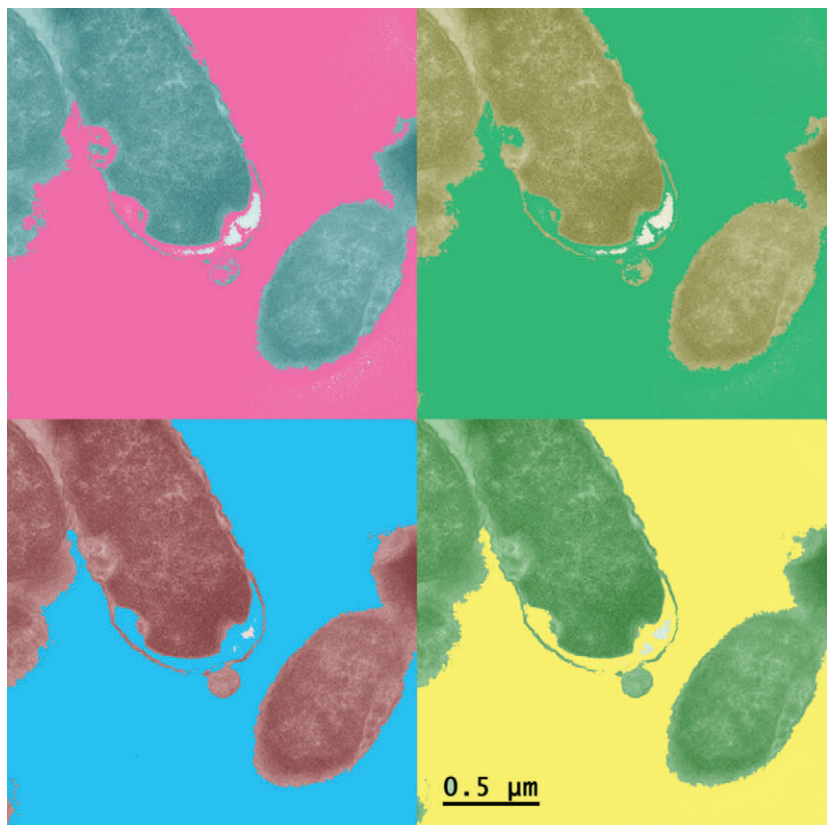


# molecular microbiology



---

**On the cover:**

*Escherichia coli* inner membrane proteins critical for cell envelope integrity

---

Cap-snatching by a yeast double-stranded RNA virus

---

Arsenite methylation creates an environmental antibiotic

---

An antibiotic specific DNA repair pathway in *Bacillus subtilis*

---

**WILEY**